

MAXWIND TYRES



QINGDAO KELUCK TYRE CO.,LTD
MAXWIND INDUSTRIAL CO.,LIMITED
ADD:Unit 2117, Building #2, No.39 Shiling Road, Qingdao, China.
Website:www.keluckyre.com
TEL:0086-532-67788323

Long Haul Series

- The widened tread and high saturation pattern designed for increasing the effective grounding area of the pattern and excellent wear resistance.



WM818

MAIN SIZES AND PARAMETERS

Sizes	Ply	Load Index	Speed level	Standard rim	Section width (mm)	Outer diameter (mm)	Design of tread depth (mm)
11R22.5	18	149/146	L	8.25	279	1054	15.0
295/80R22.5	18	152/149	M	9.00	298	1044	16.0

Long Haul Series

- Classic zigzag type patterns and more scientific pattern angle is suitable for steering positions;
- Transversal and open pattern on tires shoulder provides better gripping capability.



WM808

MAIN SIZES AND PARAMETERS

Sizes	Ply	Load Index	Speed level	Standard rim	Section width (mm)	Outer diameter (mm)	Design of tread depth (mm)
11R22.5	18	149/146	L	8.25	279	1054	16
315/80R22.5	20	156/153	K	9	312	1076	16

Long Haul Series

- Design of oblique pattern block and zigzag grooves provide better outstanding steering performance and stability as well as safe and good handling performance on dry and wet road;
- Small steel disc provide better heat dissipation and the applicability of different wheel location.



WM898

MAIN SIZES AND PARAMETERS

Sizes	Ply	Load Index	Speed level	Standard rim	Section width (mm)	Outer diameter (mm)	Design of tread depth (mm)
11R22.5	18	149/146	L	8.25	279	1054	15.0

N.America Series

- Better traction and grip performance, Design of special pattern improves traction and grip performance; extra tread formula. with design of deeper pattern enhances wear-resisting performance, extends service life;
- Optimized design of shoulder offers better heat dispersion;



WM858

MAIN SIZES AND PARAMETERS

Sizes	Ply	Load Index	Speed level	Standard rim	Section width (mm)	Outer diameter (mm)	Design of tread depth (mm)
11R22.5	18	149/146	L	8.25	279	1054	20.5
11R24.5	18	152/149	L	8.25	279	1104	21.0

Reasonable Short Haul

- Special block type pattern groove provides better driving performance;
- Special groove provides pattern self-clean performance and protect the bottom of groove.



WM887

MAIN SIZES AND PARAMETERS

Sizes	Ply	Load Index	Speed level	Standard rim	Section width (mm)	Outer diameter (mm)	Design of tread depth (mm)
295/80R22.5	18	152/149	M	9.00	298	1044	20.5
315/80R22.5	20	156/153	M	9.00	312	1082	20.5

Reasonable Short Haul

- Deeper pattern with formulation of abrasion resistance and low heating performance for longer miles;
- Open shoulder and block type pattern provides strong traction and gripping stress.



WM888

MAIN SIZES AND PARAMETERS

Sizes	Ply	Load Index	Speed level	Standard rim	Section width (mm)	Outer diameter (mm)	Design of tread depth (mm)
295/80R22.5	18	152/149	M	9.00	298	1044	20.5
315/80R22.5	20	156/153	M	9.00	312	1082	20.5

Reasonable Long Haul

- Broad tread and deep groove pattern, transversal groove, and shoulder transversal pattern to provide good driving performance and abrasion resistance.



WM838

MAIN SIZES AND PARAMETERS

Sizes	Ply	Load Index	Speed level	Standard rim	Section width (mm)	Outer diameter (mm)	Design of tread depth (mm)
295/80R22.5	18	152/149	M	9.00	298	1044	17

Long Haul Series

- Design of oblique pattern block and zigzag grooves provide better outstanding steering performance and stability as well as safe and good handing performance on dry and wet road.



WM848

MAIN SIZES AND PARAMETERS

Sizes	Ply	Load Index	Speed level	Standard rim	Section width (mm)	Outer diameter (mm)	Design of tread depth (mm)
11R24.5	18	152/149	L	8.25	279	1104	16
295/80R22.5	18	152/149	M	9.00	298	1044	16.5
315/80R22.5	20	156/153	L	9.00	312	1082	16.5

Reasonable Short Haul

- Big block patterns provides better driving performance and gripping stress on bad road;
- Interlaced reinforcing rib design at the pattern block bottom provides better tear resistance and anti-puncturing performance.



WM868

MAIN SIZES AND PARAMETERS

Sizes	Ply	Load Index	Speed level	Standard rim	Section width (mm)	Outer diameter (mm)	Design of tread depth (mm)
11R22.5	18	149/146	L	8.25	279	1054	20.5

Long Haul Series

- Design of oblique pattern block and zigzag grooves provide better outstanding steering performance and stability as well as safe and good handing performance on dry and wet road.



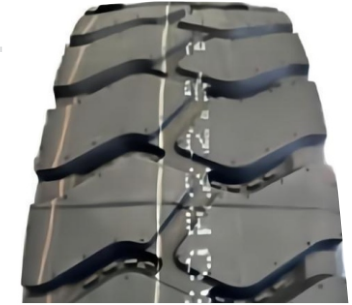
WM897

MAIN SIZES AND PARAMETERS

Sizes	Ply	Load Index	Speed level	Standard rim	Section width (mm)	Outer diameter (mm)	Design of tread depth (mm)
315/80R22.5	20	156/153	M	9.00	312	1076	15.5

Mining & Building

- Big block patterns provides better driving performance and gripping stress on bad road;
- Interlaced reinforcing rib design at the pattern block bottom provides better tear resistance and anti-puncturing performance.



WM899

MAIN SIZES AND PARAMETERS

Sizes	Ply	Load Index	Speed level	Standard rim	Section width (mm)	Outer diameter (mm)	Design of tread depth (mm)
295/80R22.5	18	152/149	M	9.00	298	1044	20.5

Mining & Building

- Big block patterns provides better driving performance and gripping stress on bad road;
- Interlaced reinforcing rib design at the pattern block bottom provides better tear resistance and anti-puncturing performance.



516

MAIN SIZES AND PARAMETERS

Sizes	Ply	Load Index	Speed level	Standard rim	Section width (mm)	Outer diameter (mm)	Design of tread depth (mm)
12.00R20	20	156/153	K	8.5	312	1125	17.00
13R22.5	18	154/151	L	9.75	320	1124	17.00



Mining & Building

- Big block patterns provides better driving performance and gripping stress on bad road;
- Interlaced reinforcing rib design at the pattern block bottom provides better tear resistance and anti-puncturing performance.



578

MAIN SIZES AND PARAMETERS

Sizes	Ply	Load Index	Speed level	Standard rim	Section width (mm)	Outer diameter (mm)	Design of tread depth (mm)
12.00R20	20	156/153	F	8.50	315	1125	19.00
13R22.5	20	156/153	K	9.75	320	1124	19.50

Reasonable Long Haul

- Classic zigzag type patterns and more scientific pattern angle is suitable for steering positions



869

MAIN SIZES AND PARAMETERS

Sizes	Ply	Load Index	Speed level	Standard rim	Section width (mm)	Outer diameter (mm)	Design of tread depth (mm)
12.00R20	20	156/153	K	8.50	315	1125	17.00
11.00R20	18	152/149	K	8.00	293	1085	16.50
12R22.5	18	152/149	M	9.00	300	1084	16.50



Mining & Building

- Big block patterns provides better driving performance and gripping stress on bad road;
- Interlaced reinforcing rib design at the pattern block bottom provides better tear resistance and anti-puncturing performance.



579

MAIN SIZES AND PARAMETERS

Sizes	Ply	Load Index	Speed level	Standard rim	Section width (mm)	Outer diameter (mm)	Design of tread depth (mm)
12.00R20	20	156/153	B	8.50	315	1125	26.00
13R22.5	20	156/153	K	9.75	320	1124	19.50

Long Haul Series

- Design of oblique pattern block and zigzag grooves provide better outstanding steering performance and stability as well as safe and good handing performance on dry and wet road.



866

MAIN SIZES AND PARAMETERS

Sizes	Ply	Load Index	Speed level	Standard rim	Section width (mm)	Outer diameter (mm)	Design of tread depth (mm)
11.00R20	18	152/149	K	8.00	293	1085	16.50
12R22.5	18	152/149	M	9.00	300	1084	16.50

Long Haul Series

- Broad tread and deep groove pattern, transversal groove, and shoulder transversal pattern to provide good driving performance and abrasion resistance;



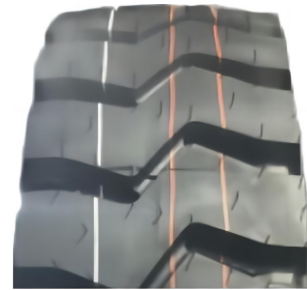
819

MAIN SIZES AND PARAMETERS

Sizes	Ply	Load Index	Speed level	Standard rim	Section width (mm)	Outer diameter (mm)	Design of tread depth (mm)
11.00R20	18	152/149	K	8.0	293	1085	17.0
12.00R20	20	156/153	K	8.5	315	1125	17.5
12R22.5	18	152/149	M	9.0	300	1085	17.5

Mining & Building

- Big block patterns provides better driving performance and gripping stress on bad road;
- Interlaced reinforcing rib design at the pattern block bottom provides better tear resistance and anti-puncturing performance.



828

MAIN SIZES AND PARAMETERS

Sizes	Ply	Load Index	Speed level	Standard rim	Section width (mm)	Outer diameter (mm)	Design of tread depth (mm)
11.00R20	18	152/149	K	8.0	293	1096	21.5
12.00R20	20	156/153	K	8.5	315	1136	22

Long Haul Series

- Design of oblique pattern block and zigzag grooves provide better outstanding steering performance and stability as well as safe and good handling performance on dry and wet road.



889

MAIN SIZES AND PARAMETERS

Sizes	Ply	Load Index	Speed level	Standard rim	Section width (mm)	Outer diameter (mm)	Design of tread depth (mm)
11R22.5	16	146/143	M	8.25	279	1054	17.0
12R22.5	18	152/149	M	9.00	312	1076	17.0

Reasonable Short Haul

- Deeper pattern with formulation of abrasion resistance and low heating performance for longer miles;
- Open shoulder and block type pattern provides strong traction and gripping stress.



556

MAIN SIZES AND PARAMETERS

Sizes	Ply	Load Index	Speed level	Standard rim	Section width (mm)	Outer diameter (mm)	Design of tread depth (mm)
12.00R20	20	156/153	F	8.5	315	1125	18.0



Mining & Building

- Big block patterns provides better driving performance and gripping stress on bad road;
- Interlaced reinforcing rib design at the pattern block bottom provides better tear resistance and anti-puncturing performance.



929



MAIN SIZES AND PARAMETERS

Sizes	Ply	Load Index	Speed level	Standard rim	Section width (mm)	Outer diameter (mm)	Design of tread depth (mm)
12.00R20	20	156/153	D	8.5	300	1085	23.0

Mining & Building

- Big block patterns provides better driving performance and gripping stress on bad road;
- Interlaced reinforcing rib design at the pattern block bottom provides better tear resistance and anti-puncturing performance.



939



MAIN SIZES AND PARAMETERS

Sizes	Ply	Load Index	Speed level	Standard rim	Section width (mm)	Outer diameter (mm)	Design of tread depth (mm)
12.00R20	20	156/153	D	8.5	300	1085	19.5



Mining & Building

- Big block patterns provides better driving performance and gripping stress on bad road;
- Interlaced reinforcing rib design at the pattern block bottom provides better tear resistance and anti-puncturing performance.



398

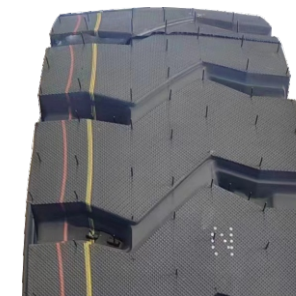


MAIN SIZES AND PARAMETERS

Sizes	Ply	Load Index	Speed level	Standard rim	Section width (mm)	Outer diameter (mm)	Design of tread depth (mm)
12.00R20	20	156/153	J	8.5	300	1085	23.5

Mining & Building

- Big block patterns provides better driving performance and gripping stress on bad road;
- Interlaced reinforcing rib design at the pattern block bottom provides better tear resistance and anti-puncturing performance.



399



MAIN SIZES AND PARAMETERS

Sizes	Ply	Load Index	Speed level	Standard rim	Section width (mm)	Outer diameter (mm)	Design of tread depth (mm)
12.00R20	20	156/153	J	8.5	300	1085	23.5



Mining & Building

- Big block patterns provides better driving performance and gripping stress on bad road.



818

MAIN SIZES AND PARAMETERS

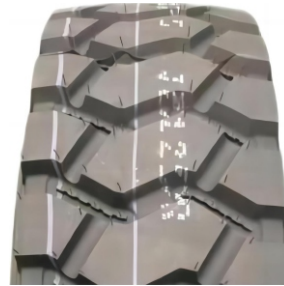
Sizes	Ply	Load Index	Speed level	Standard rim	Section width (mm)	Outer diameter (mm)	Design of tread depth (mm)
11.00R20	18	152/149	K	8.00	293	1085	18.00

HIGH QUALITY MAX SERIES



Mining & Building

- Big block with deep patterns, provides strong gripping stress on bad road.



WM783+

MAIN SIZES AND PARAMETERS

Sizes	Ply	Load Index	Speed level	Standard rim	Section width (mm)	Outer diameter (mm)	Design of tread depth (mm)
215/75R17.5	16	127/124	K	6.00	211	767	15.0
235/75R17.5	16	132/129	M	6.75	233	797	15.5

Mining & Building

- Optimized design of shoulder offers better heat dispersion;
- Optimized design of the grooves bottom prevents the bottom from damaging by stone.



WM790+

MAIN SIZES AND PARAMETERS

Sizes	Ply	Load Index	Speed level	Standard rim	Section width (mm)	Outer diameter (mm)	Design of tread depth (mm)
225/80R17.5	16	129/127	J	6.75	226	805	15.0

Reasonable Short Haul

- Deeper pattern with formulation of abrasion resistance and low heating performance for longer miles.



MAX78

MAIN SIZES AND PARAMETERS

Sizes	Ply	Load Index	Speed level	Standard rim	Section width (mm)	Outer diameter (mm)	Design of tread depth (mm)
215/75R17.5	16	127/124	K	6.00	211	767	15.0
235/75R17.5	16	132/129	K	6.75	233	797	15.5

Long Haul Series

- The widened tread and high saturation pattern designed for increasing the effective grounding area of the pattern and excellent wear resistance.



MAX79

MAIN SIZES AND PARAMETERS

Sizes	Ply	Load Index	Speed level	Standard rim	Section width (mm)	Outer diameter (mm)	Design of tread depth (mm)
215/75R17.5	16	127/124	M	6.00	211	767	13.0
235/75R17.5	16	132/129	M	6.75	233	797	13.0

Reasonable Short Haul

- Deeper pattern with formulation of abrasion resistance and low heating performance for longer miles.



MAX82

MAIN SIZES AND PARAMETERS

Sizes	Ply	Load Index	Speed level	Standard rim	Section width (mm)	Outer diameter (mm)	Design of tread depth (mm)
11R22.5	18	149/146	L	8.25	279	1054	20.5
11R24.5	18	152/149	L	8.25	279	1104	20.5

Reasonable Short Haul

- Square block pattern with transverse grooves between pattern blocks providing excellent driving performance.



MAX83

MAIN SIZES AND PARAMETERS

Sizes	Ply	Load Index	Speed level	Standard rim	Section width (mm)	Outer diameter (mm)	Design of tread depth (mm)
295/80R22.5	18	152/149	M	9.00	298	1044	20.5

Long Haul Series

- Design of oblique pattern block and zigzag grooves provide better outstanding steering performance and stability as well as safe and good handling performance on dry and wet road.



MAX85

MAIN SIZES AND PARAMETERS

Sizes	Ply	Load Index	Speed level	Standard rim	Section width (mm)	Outer diameter (mm)	Design of tread depth (mm)
295/80R22.5	18	152/149	M	9.00	298	1044	17.0

Mining & Building

- Interlaced reinforcing rib design at the pattern block bottom provides better tear resistance and anti-puncturing performance.



MAX86

MAIN SIZES AND PARAMETERS

Sizes	Ply	Load Index	Speed level	Standard rim	Section width (mm)	Outer diameter (mm)	Design of tread depth (mm)
295/80R22.5	18	152/149	F	9.00	298	1044	22.0

Long Haul Series

- Small sipes help to heat dissipation and the applicability of different wheel location.



MAX87

MAIN SIZES AND PARAMETERS

Sizes	Ply	Load Index	Speed level	Standard rim	Section width (mm)	Outer diameter (mm)	Design of tread depth (mm)
11R22.5	18	149/146	M	8.25	279	1054	15.0

Long Haul Series

- Design of proper proportion for block and groove to provide better wear resistance performance;
- Design of broader tires shoulder can prevent partial wear better.



MAX88

MAIN SIZES AND PARAMETERS

Sizes	Ply	Load Index	Speed level	Standard rim	Section width (mm)	Outer diameter (mm)	Design of tread depth (mm)
295/75R22.5	16	146/143	M	9.00	298	1014	11.5

Long Haul Series

- Design of oblique pattern block and zigzag grooves provide better outstanding steering performance and stability as well as safe and good handling performance on dry and wet road.



MAX89

MAIN SIZES AND PARAMETERS

Sizes	Ply	Load Index	Speed level	Standard rim	Section width (mm)	Outer diameter (mm)	Design of tread depth (mm)
295/75R22.5	16	146/143	M	9.00	298	1014	15.0

Reasonable Long Haul

- Optimized design of shoulder offers better heat dispersion;
- Optimized design of the grooves bottom prevents the bottom from damaging by stone.



MAX90

MAIN SIZES AND PARAMETERS

Sizes	Ply	Load Index	Speed level	Standard rim	Section width (mm)	Outer diameter (mm)	Design of tread depth (mm)
295/75R22.5	16	146/143	K	9.00	298	1014	20.5

Reasonable Long Haul

- Classic zigzag type patterns and more scientific pattern angle is suitable for steering positions;
- Transversal and open pattern on tires shoulder provides better gripping capability.



MAX91

MAIN SIZES AND PARAMETERS

Sizes	Ply	Load Index	Speed level	Standard rim	Section width (mm)	Outer diameter (mm)	Design of tread depth (mm)
11R22.5	18	149/146	M	8.25	279	1054	16.5
11R24.5	18	152/149	L	8.25	279	1104	16.5

Mining & Building

- Interlaced reinforcing rib design at the pattern block bottom, prevents groove bottom from being punctured, provides better tear resistance and anti-puncturing performance.



MAX92

MAIN SIZES AND PARAMETERS

Sizes	Ply	Load Index	Speed level	Standard rim	Section width (mm)	Outer diameter (mm)	Design of tread depth (mm)
295/80R22.5	18	152/149	F	9.00	298	1044	22.0
12R22.5	18	152/149	F	9.00	300	1085	25.0
315/80R22.5	22	164/160	F	9.00	312	1076	22.0
			D				

Reasonable Long Haul

- Widened tread improves tire grounded pressure, one-way pattern groove provides better driving performance and wet and slip resistance.



MAX94

MAIN SIZES AND PARAMETERS

Sizes	Ply	Load Index	Speed level	Standard rim	Section width (mm)	Outer diameter (mm)	Design of tread depth (mm)
295/80R22.5	18	152/149	J	9.00	298	1044	19.5
315/80R22.5	22	164/160	G	9.00	312	1076	19.5
			D				

Reasonable Short Haul

- Square block pattern with transverse grooves between pattern blocks providing excellent driving performance;



MAX96

MAIN SIZES AND PARAMETERS

Sizes	Ply	Load Index	Speed level	Standard rim	Section width (mm)	Outer diameter (mm)	Design of tread depth (mm)
295/80R22.5	18	152/149	M	9.00	298	1044	20.5
315/80R22.5	22	164/160	K	9.00	312	1076	20.5

Long Haul Series

- Variable pitch design for low noise, fuel saving and excellent high speed performance;
- The special four-layer belt design for improving the steering stability of the tire.



WM797+

MAIN SIZES AND PARAMETERS

Sizes	Ply	Load Index	Speed level	Standard rim	Section width (mm)	Outer diameter (mm)	Design of tread depth (mm)
295/80R22.5	18	152/149	M	9.00	298	1044	17

Reasonable Long Haul

- Optimized design of shoulder offers better heat dispersion;
- Optimized design of the grooves bottom prevents the bottom from damaging by stone.



MAX98

MAIN SIZES AND PARAMETERS

Sizes	Ply	Load Index	Speed level	Standard rim	Section width (mm)	Outer diameter (mm)	Design of tread depth (mm)
11R22.5	18	149/146	L	8.25	279	1054	22.5
11R24.5	18	152/149	L	8.25	279	1104	20.5

Long Haul Series

- Variable pitch design for low noise, fuel saving and excellent high speed performance;
- The special four-layer belt design for improving the steering stability of the tire.



MAX99

MAIN SIZES AND PARAMETERS

Sizes	Ply	Load Index	Speed level	Standard rim	Section width (mm)	Outer diameter (mm)	Design of tread depth (mm)
11R22.5	18	149/146	M	8.25	279	1054	15
11R24.5	18	152/149	L	8.25	279	1104	15
295/80R22.5	18	152/149	M	9.00	298	1044	17
315/80R22.5	22	164/160	L	9.00	312	1076	15.5

Long Haul Series

- The widened tread and high saturation pattern designed for increasing the effective grounding area of the pattern and excellent wear resistance.



WM789+

MAIN SIZES AND PARAMETERS

Sizes	Ply	Load Index	Speed level	Standard rim	Section width (mm)	Outer diameter (mm)	Design of tread depth (mm)
225/80R17.5	16	129/127	M	6.75	226	805	13.0

PLUS SERIES



MAXWIND
TYRES

Long Haul Series

- The asymmetric and bold line type groove pattern in the middle area enhances the driving performance of tire and excellent self-cleaning performance of patterns.



WM108PLUS

MAIN SIZES AND PARAMETERS

Sizes	Ply	Load Index	Speed level	Standard rim	Section width (mm)	Outer diameter (mm)	Design of tread depth (mm)
245/70R19.5	16	135/133	M	7.50	248	839	14.0

Long Haul Series

- Design of oblique pattern block and zigzag grooves provide better outstanding steering performance and stability as well as safe and good handing performance on dry and wet road.



WM112PLUS

MAIN SIZES AND PARAMETERS

Sizes	Ply	Load Index	Speed level	Standard rim	Section width (mm)	Outer diameter (mm)	Design of tread depth (mm)
7.00R16LT	14	118/114	M	5.50F	200	775	10.0
225/80R17.5	16	129/127	M	6.75	226	805	11.0
265/70R19.5	18	143/141	M	7.50	262	867	14.5

Long Haul Series

- Design of four consistent grooves and slant-edge pattern provide outstanding drainage and grip performance.



WM115PLUS

MAIN SIZES AND PARAMETERS

Sizes	Ply	Load Index	Speed level	Standard rim	Section width (mm)	Outer diameter (mm)	Design of tread depth (mm)
7.50R16LT	16	125/121	L	6.00G	215	805	12.0

Reasonable Short Haul

- Deeper pattern with formulation of abrasion resistance and low heating performance for longer miles.



WM116PLUS

MAIN SIZES AND PARAMETERS

Sizes	Ply	Load Index	Speed level	Standard rim	Section width (mm)	Outer diameter (mm)	Design of tread depth (mm)
295/80R22.5	20	154/151	K	9.00	298	1044	19.5
315/80R22.5	22	167/164	L	9.00	312	1076	19.5

Mining & Building

- Big block with deep patterns, provides strong gripping stress on bad road.



WM119PLUS

MAIN SIZES AND PARAMETERS

Sizes	Ply	Load Index	Speed level	Standard rim	Section width (mm)	Outer diameter (mm)	Design of tread depth (mm)
11R22.5	18	149/146	J	9.00	279	1054	21.0
12R22.5	18	152/149	J	9.00	300	1085	22.5
315/80R22.5	22	167/164	J	9.00	312	1076	22.5
315/80R22.5	22	167/161	D	9.00	312	1076	22.5

Reasonable Short Haul

- Specially designed tread pattern for stronger grip performance tire;
- Optimized design of widened side blocks to improve shoulder rigidity and improve tire wear resistance.



WM183PLUS

MAIN SIZES AND PARAMETERS

Sizes	Ply	Load Index	Speed level	Standard rim	Section width (mm)	Outer diameter (mm)	Design of tread depth (mm)
12.00R20(K)	22	158/155	K	8.5	315	1125	16.5

Reasonable Short Haul

- Deeper pattern with formulation of abrasion resistance and low heating performance for longer miles.



WM263PLUS

MAIN SIZES AND PARAMETERS

Sizes	Ply	Load Index	Speed level	Standard rim	Section width (mm)	Outer diameter (mm)	Design of tread depth (mm)
12.00R20(K)	22	158/155	E	8.5	315	1125	20.0

Mining & Building

- Big block patterns provides better driving performance and gripping stress on bad road.



WM769PLUS

MAIN SIZES AND PARAMETERS

Sizes	Ply	Load Index	Speed level	Standard rim	Section width (mm)	Outer diameter (mm)	Design of tread depth (mm)
12.00R20	22	158/155	E	8.5	315	1136	22.5

Mining & Building

- Big block with deep patterns, provides strong gripping stress on bad road; Interlaced reinforcing rib design at the pattern block bottom, prevents groove bottom from being punctured, provides better tear resistance and anti-puncturing performance.



WM126PLUS

MAIN SIZES AND PARAMETERS

Sizes	Ply	Load Index	Speed level	Standard rim	Section width (mm)	Outer diameter (mm)	Design of tread depth (mm)
12.00R20	22	158/155	E	8.5	315	1136	24.5

Winter Series

- Big block specially designed for now road provides good control performance and abrasion resistance;
- Proper steel disc design provides good gripping performance and wet slip resistance when dribing on snow road, improve tires ice-breaking performance and driving safety;
- Ultra-wide of tread provides better driving performance on the road. Big blokc specially designed for now road provides good control performance and abrasion resistance.



WM111PLUS

MAIN SIZES AND PARAMETERS

Sizes	Ply	Load Index	Speed level	Standard rim	Section width (mm)	Outer diameter (mm)	Design of tread depth (mm)
315/70R22.5	20	151/148	L	9.00	312	1020	24.0

TBB SERIES



MAX89
8.25-20 16PR
9.00-20 18PR
10.00-20 18PR
11.00-20 20PR
12.00-20 24PR



MAX87
10.00-20 18PR
11.00-20 18PR



WM878
7.00-16 14PR



WM868
7.50-16 16PR



M777
5.00-12 10PR

M888
6.40/6.50-13
10PR
6.50-14 10PR
6.00-12 10PR
5.00-12 10PR



WM323
7.50-16 16PR
7.00-16 14PR

EXTRA-LUG
7.50-16 16PR



M3
8.25-20 16PR
9.00-20 16PR
10.00-20 18PR
11.00-20 18PR

M2
8.25-16 18PR
7.50-16 16PR
7.00-16 14PR
7.00-15 14PR



M11(333)
8.25-16 18PR

M11(235)
8.25-20 18PR
7.00-15 14PR
6.50-14 10PR





M11
7.00-15 14RP
6.50-14 10PR



M15
9.00-20 18PR
10.00-20 18PR
11.00-20 18PR



M178
7.50-16 16PR
7.00-16 14PR



M666
5.00-12 10PR

OTR SERIES



657

4.00-8
5.00-8
15x4 1/2-8(125/75-8)
16x6-8(150/75-8)
18x7-8(180/70-8)
140/55-9
21x8-9(200/75-9)
6.50-10
23x9-10(225/75-10)
200/50-10
7.00-12
27x10-12(250/75-12)
6.00-15
7.00-15
8.25-15
28x9-15(8.15-15) 225/75-15



250-15(250/70-15)
300-15(315/70-15)
7.50-16
9.00-16
7.50-20
8.25-20
9.00-20

E3/L3

29.5-25	28PR
	32PR
26.5-25	28PR
	32PR
23.5-25	20PR
	24PR
	28PR
20.5-25	20PR
	24PR
18.00-25	28PR
	32PR
17.5-25	16PR
	20PR
16.00-25	20PR
	24PR
16.00-24	20PR
	24PR
15.5-25	20PR



14.00-24	16PR
	20PR
13.00-25	16PR
	20PR
8.25-16	16PR
7.50-16	16PR



← **L-5**

26.5-25	28PR
	32PR
23.5-25	24PR

R-3 →

23.1-26	12PR
---------	------



G2-L2

23.5-25	16PR
	20PR
20.5-25	16PR
	20PR
17.5-25	16PR
	20PR
13.00-24	12PR
	16PR
14.00-24	12PR
	16PR



← **E-4**

18.00-25	32PR
	40PR

E3E →

29.5-25	28PR
	32PR
23.5-25	20PR
	24PR
	28PR
20.5-25	20PR
	24PR
17.5-25	16PR
	20PR



R1



6.00-12	6PR
6.00-14	6PR
6.00-16	6PR
6.50-16	6PR
7.50-16	6PR
7.50-20	6PR
8.3-20	6PR
8.3-24	6PR
9.5-20	8PR
9.5-24	8PR
10/75-15.3	8PR
11.2-24	8PR
11.2-28	8PR
12.4-24	10PR
12.4-28	10PR
12-38	10PR
13.6-24	10PR
13.6-28	10PR
14.9-24	10PR
14.9-28	10PR
14.9-30	10PR
15.5-38	10PR
15-24	12PR
16.9-24	10PR
16.9-28	10PR
16.9-30	12PR
16.9-34	12PR
18.4-26	12PR
18.4-30	12PR
18.4-34	12PR
18.4-38	12PR
20.8-38	12PR
23.1-26	12PR