



# ***KELUCK*** ***TYRE***



## **QINGDAO KELUCK TYRE CO.,LTD**

Add: Room 2305,Unit west ,Building 3, Longhai pearl, No.178-2 Quanling road Qingdao  
City,Shandong Province, China  
Tel: 0086-532-67788323  
Skype: keluckyre01  
Email: info@keluckyre.com  
Web: www.keluckyre.com



QINGDAO KELUCK TYRE CO.,LTD

# COMPANY PROFILE



KELUCK TYRE is located in Qingdao City, Shandong Province, Established in 2006, Keluck tyre Co., Ltd is a professional enterprise in manufacturing and marketing all kinds of Chinese tyres. Our wide ranges covers truck and bus tyre(TBR tyre), car tyre(PCR tyre), off road tyre(OTR tyre), agricultural tyre, industrial tyre and trailer tyre.

Now our factory is holding the annual production capacity of 3 million of TBR tires and 8 million of PCR tires, and 6million OTR , AGR,IND tyres. Our products enjoy good reputation in America, Europe, Australia, Africa and Asia.

Respecting quality as the life of Keluck , we have:

1. major machines from Germany,
2. steel cord from Italy, natural rubber from Malaysia,
3. engineer team from Hankook
4. strictly restrict in every process

Products have been certified by ISO9001, ISO/TS16949, DOT, ECE, E-SOUND, REACH, GCC, CCC, SONCAP, PVOC, NOM, INMETRO and other applicable standards required by particular countries. MARCHER,AEOLUS,YINBAO,LONGMA

RCH,TRIANGLE,LINGLONG,DOUBLESTAR,WINDA BOTO,HILO,AMBERSTONE,DOUBLECOIN

Thanks for the quality tyres, Thanks for our staff' s hard work ,Thanks for cutomers from all over the world , After several years' hard working, KELUCK Tires have been exporting to more than 100 countries all over the world. Keluck has been the top tyre supplier in China.

**Keluckyre Vision:** \_\_\_\_\_  
To be the best tyre supplier in China !

**Keluckyre Mission:** \_\_\_\_\_  
To achieve our Vision !  
Achieve win-win cooperation with Customers !  
Achieve more Millionaires !

**Keluckyre Faith:** \_\_\_\_\_  
Harder and Luckier !



Forming machine



Dynamic testing machine



Wire calender



Fiber rolling machine



Spindle housing

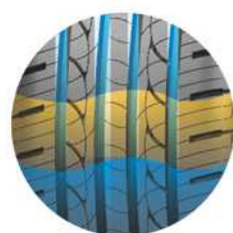
### Main Size & Specification

SIZE	LI & SS	STD RIM	Thread Depth (mm)	UTQG
<b>13 inch'</b>				
155/65R13	73T/H	4.5B	6.6	420AA
155/70R13	75T	4.5B	7.5	420AA
155/80R13	79T	4.5B	7.5	420AA
165/65R13	77T	5.0B	7.5	420AA
165/70R13	79T	5.0B	7.5	420AA
165/80R13	83T	4.5B	7.5	420AA
175/70R13	82T	5.0B	7.5	420AA
185/70R13	86T	5.5B	7.5	420AA
<b>14 inch'</b>				
155/55R14	69V	5.0J	7.5	420AA
165/55R14	72V	5.0J	7.5	420AA
165/60R14	75H	5.0J	7.5	420AA
165/65R14	79T	5.0J	7.5	420AA
165/70R14	81T	5.0J	7.5	420AA
175/65R14	82H	5.0J	7.5	420AA
175/70R14	84T	5.0J	7.5	420AA
185/60R14	82H	5.5J	7.5	420AA
185/65R14	86H	5.5J	7.5	420AA
185/70R14	88T	5.5J	7.5	420AA
195/60R14	86H	6.0J	7.5	420AA
195/70R14	91T	6.0J	7.5	420AA
205/60R14	88H	6.0J	7.9	420AA
205/70R14	98T	6.0J	7.9	420AA
<b>15 inch'</b>				
165/50R15	73V	5.0J	7.5	420AA
165/55R15	75V	5.0J	7.5	420AA
175/65R15	84H	5.0J	7.5	420AA
185/45R15	75V	6.0J	7.5	420AA
185/55R15	82V	6.0J	7.7	420AA
185/60R15	84H	5.5J	7.5	420AA
185/65R15	88H	5.5J	7.5	420AA
195/50R15	82V	6.0J	7.9	420AA
195/55R15	85V	6.0J	7.7	420AA
195/60R15	88H/V	6.0J	7.5	420AA
195/65R15	91H/V	6.0J	7.9	420AA
205/60R15	91H	6.0J	7.9	420AA
205/65R15	94H	6.0J	7.9	420AA
205/70R15	96T	6.0J	7.7	420AA
215/60R15	94H	6.5J	7.9	420AA
215/65R15	96H	6.5J	7.9	420AA
215/65R15	100H	6.5J	7.9	420AA
215/70R15	98T	6.5J	7.7	420AA
<b>16 inch'</b>				
165/40R16	70V	6.0J	7.5	420AA
165/45R16	70V	5.5J	7.5	420AA
195/45R16	84V	6.5J	7.9	420AA
195/55R16	87V	6.0J	7.9	420AA
205/45R16	87V	7.0J	7.9	420AA
205/50R16	87V/W	6.5J	7.9	420AA
205/55R16	91V	6.5J	7.9	420AA
205/55R16	94V/W	6.5J	7.9	420AA
205/60R16	92H	6.0J	7.9	420AA
205/65R16	95H	6.0J	7.9	420AA
215/55R16	93V	7.0J	7.9	420AA
215/55R16	97V/W	7.0J	7.9	420AA
215/60R16	99H	6.5J	7.9	420AA
225/55R16	99W	7.0J	7.9	420AA
225/60R16	98H	6.5J	7.9	420AA
<b>17 inch'</b>				
215/65R17	98H	6.5J	7.9	420AA
235/60R17	102H	7.0J	7.9	420AA

PCR



## Economy Car Tyre XP1



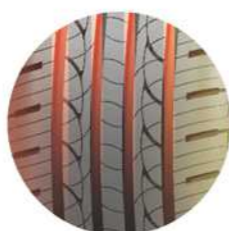
Five-pitch 3D noise-free technology disturbs resonance to achieve tire mute.



Finely-divided tread pattern, corresponding to each division of the steel, ensures fantastic ground grasping performance in wetlands and improves driving safety.



Four linear grooves ensures superior draining performance.



Tread cut-resistance element increase anti-irregular wear performance.



## Economy Car Tyre **XP2**



Five-pitch 3D noise-free technology disturbs resonance to achieve tire mute.



Big block pattern design improved tire rigidity.



Four longitudinal grooves and wide draining design provide brilliant drainage performance and maneuverability.



Multi-arc tread design provides superior maneuverability.

### Main Size & Specification

SIZE	LI & SS	STD RIM	Thread Depth (mm)	UTQG
<b>13 inch'</b>				
155/65R13	73T/H	4.5B	6.6	420AA
155/70R13	75T	4.5B	7.5	420AA
155/80R13	79T	4.5B	7.5	420AA
165/65R13	77T	5.0B	7.5	420AA
165/70R13	79T	5.0B	7.5	420AA
165/80R13	83T	4.5B	7.5	420AA
175/70R13	82T	5.0B	7.5	420AA
185/70R13	86T	5.5B	7.5	420AA
<b>14 inch'</b>				
155/55R14	69V	5.0J	7.5	420AA
165/55R14	72V	5.0J	7.5	420AA
165/60R14	75H	5.0J	7.5	420AA
165/65R14	79T	5.0J	7.5	420AA
165/70R14	81T	5.0J	7.5	420AA
175/65R14	82H	5.0J	7.5	420AA
175/70R14	84T	5.0J	7.5	420AA
185/60R14	82H	5.5J	7.5	420AA
185/65R14	86H	5.5J	7.5	420AA
185/70R14	88T	5.5J	7.5	420AA
195/60R14	86H	6.0J	7.5	420AA
195/70R14	91T	6.0J	7.5	420AA
205/60R14	88H	6.0J	7.9	420AA
205/70R14	98T	6.0J	7.9	420AA
<b>15 inch'</b>				
165/50R15	73V	5.0J	7.5	420AA
165/55R15	75V	5.0J	7.5	420AA
175/65R15	84H	5.0J	7.5	420AA
185/45R15	75V	6.0J	7.5	420AA
185/55R15	82V	6.0J	7.7	420AA
185/60R15	84H	5.5J	7.5	420AA
185/65R15	88H	5.5J	7.5	420AA
195/50R15	82V	6.0J	7.9	420AA
195/55R15	85V	6.0J	7.7	420AA
195/60R15	88H/V	6.0J	7.5	420AA
195/65R15	91H/V	6.0J	7.9	420AA
205/60R15	91H	6.0J	7.9	420AA
205/65R15	94H	6.0J	7.9	420AA
205/70R15	96T	6.0J	7.7	420AA
215/60R15	94H	6.5J	7.9	420AA
215/65R15	96H	6.5J	7.9	420AA
215/65R15	100H	6.5J	7.9	420AA
215/70R15	98T	6.5J	7.7	420AA
<b>16 inch'</b>				
165/40R16	70V	6.0J	7.5	420AA
165/45R16	70V	5.5J	7.5	420AA
195/45R16	84V	6.5J	7.9	420AA
195/55R16	87V	6.0J	7.9	420AA
205/45R16	87V	7.0J	7.9	420AA
205/50R16	87V/W	6.5J	7.9	420AA
205/55R16	91V	6.5J	7.9	420AA
205/55R16	94V/W	6.5J	7.9	420AA
205/60R16	92H	6.0J	7.9	420AA
205/65R16	95H	6.0J	7.9	420AA
215/55R16	93V	7.0J	7.9	420AA
215/55R16	97V/W	7.0J	7.9	420AA
215/60R16	99H	6.5J	7.9	420AA
225/55R16	99W	7.0J	7.9	420AA
225/60R16	98H	6.5J	7.9	420AA
215/65R16	98H	6.5J	7.9	420AA
225/70R16	103T	6.5J	7.9	440AA
235/60R16	100H	6.5J	8.5	460AA
<b>17 inch'</b>				
225/60R17	99H	6.5J	7.9	420AA
215/60R17	96H	6.5J	7.9	440AA
225/65R17	102H	6.5J	7.9	420AA
235/65R17	104H	6.5J	7.9	440AA
<b>18 inch'</b>				
225/55R18	98V	6.5J	8.5	460AA
225/60R18	100H	6.5J	8.5	440AA

### Main Size & Specification

SIZE	LI & SS	STD RIM	Thread Depth (mm)	UTQG
<b>17 inch'</b>				
205/40ZR17	84Wxl	7.5J	7.9	480AA
205/45ZR17	88Wxl	7.0J	7.9	480AA
205/50ZR17	93Wxl	6.5J	7.9	480AA
215/40ZR17	87Wxl	7.5J	7.9	480AA
215/45ZR17	91Wxl	7.0J	7.9	480AA
215/50ZR17	95Wxl	7.0J	7.9	480AA
215/55ZR17	98Wxl	7.0J	7.9	480AA
225/45ZR17	94Wxl	7.5J	7.9	480AA
225/50ZR17	98Wxl	7.0J	7.9	480AA
225/55ZR17	101Wxl	7.0J	7.9	480AA
235/45ZR17	97Wxl	8.0J	7.9	480AA
235/50ZR17	96Wxl	7.5J	7.9	480AA
235/55ZR17	99Wxl	7.5J	7.9	480AA
245/45ZR17	99Wxl	8.0J	7.9	480AA
<b>18 inch'</b>				
215/35ZR18	84Wxl	7.5J	7.9	480AA
225/40ZR18	92Wxl	8.0J	7.9	480AA
225/45ZR18	95Wxl	7.5J	7.9	480AA
225/50ZR18	95Wxl	7.0J	7.9	480AA
225/55ZR18	98Wxl	7.0J	7.9	480AA
235/40ZR18	95Wxl	8.5J	7.9	480AA
235/45ZR18	94Wxl	8.0J	7.9	480AA
235/45ZR18	98Wxl	8.0J	7.9	480AA
235/50ZR18	97Wxl	7.5J	7.9	480AA
235/50ZR18	101Wxl	7.5J	7.9	480AA
235/55ZR18	100Wxl	7.5J	7.9	480AA
245/40ZR18	97Wxl	8.5J	7.9	480AA
245/45ZR18	100Wxl	8.0J	7.9	480AA
255/35ZR18	94Wxl	9.0J	7.9	480AA
<b>19 inch'</b>				
235/35ZR19	91Yxl	8.5J	7.9	480AA
245/40ZR19	98Wxl	8.5J	7.9	480AA
255/40ZR19	100Wxl	9.0J	7.9	480AA
<b>20 inch'</b>				
245/35ZR20	95Wxl	8.5J	7.9	480AA

PCR



## UHP Tyre XU1



Efficiently ground grasping capability and lower rolling resistance.



Special tread design brings greater lateral rigidity and longitudinal flexibility.



Asymmetric tread design with internal tiny pattern, external big block for maximizing ground contacting area.



Achieve optimum balance of control, low noise and comfortable by optimize distribute of pattern blocks and groove.

### Main Size & Specification

SIZE	LI & SS	STD RIM	Thread Depth (mm)	UTQG
<b>14 inch'</b>				
205/75R14	95T	5.5J	7.9	520AA
<b>15 inch'</b>				
205/70R15	96T	6.0J	8.5	520AA
205/75R15	97T	5.5J	8.5	520AA
215/75R15	100T	6.0J	8.5	520AA
225/75R15	102T	6.0J	8.5	520AA
225/70R15	100T	6.5J	8.5	520AA
235/75R15	105T/H	6.5J	8.5	520AA
<b>16 inch'</b>				
235/70R16	106T/H	7.0J	8.5	520AA
P235/60R16	100H	7.0J	8.5	500AA
P215/70R16	100H	6.5J	8.5	500AA
P225/70R16	103H	6.5J	8.5	500AA
P235/70R16	106H	7.0J	8.5	500AA
P245/70R16	111Hxl	7.0J	8.5	500AA
P255/70R16	111H	7.5J	8.5	500AA
P265/70R16	112H	8.0J	8.5	500AA
P265/75R16	116H	7.5J	8.5	500AA
<b>17 inch'</b>				
235/65R17	104T/H	7.0J	8.5	520AA
P235/55R17	99H	7.5J	8.5	500AA
P225/60R17	99H	6.5J	8.5	500AA
P225/65R17	102H	6.5J	8.5	500AA
P235/65R17	108Hxl	7.0J	8.5	500AA
P245/65R17	111Hxl	7.0J	8.5	500AA
P265/65R17	112H	7.6J	8.5	500AA
P265/70R17	115H	7.7J	8.5	500AA
<b>18 inch'</b>				
P255/55R18	109Vxl	8.0J	8.5	500AA
P235/60R18	107Hxl	7.0J	8.5	500AA
275/65R18	116H	8.0J	8.5	-
<b>20 inch'</b>				
275/60R20	115H	8.0J	8.5	-

PCR



## Sporting Car / SUV HT Tyre **XVI1**



Unique carbon polymer composite improved efficiently ground grasping capability and lowers rolling resistance.



Optimized pitch arrangement and tread profile reduce noise.



Four longitudinal grooves, wide contacting area provide outstanding drainage performance.

### Main Size & Specification

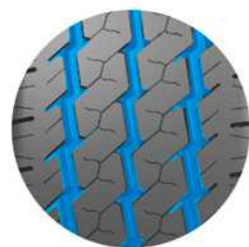
SIZE	LI & SS	STD RIM	Thread Depth (mm)	SINGLELOAD kg
<b>14 inch'</b>				
185R14C	102/100R/S	5.5J	9.3	850/800
195R14C	106/104R/S	5.5J	9.3	950/900
205R14C	109/107R/S	6.0J	9.3	1030/975
<b>15 inch'</b>				
195R15C	106/104R/S	5.5J	9.3	950/900
195/70R15C	104/102R/S	6.0J	9.3	900/850
205/70R15C	106/104R/S	6.0J	9.3	950/900
215/70R15C	109/107R	6.5J	9.3	1030/975
225/70R15C	112/110R/S	6.5J	9.3	1120/1060
<b>16 inch'</b>				
185/75R16C	104/102R/S	5.0J	9.3	900/850
195/75R16C	107/105R/S	5.5J	9.3	975/925
195/65R16C	104/102T	6.0J	9.0	900/850
205/75R16C	110/108R	5.5J	9.3	1060/1000
205/65R16C	107/105T	6.0J	9.0	975/925
215/75R16C	113/111R	6.0J	9.3	1150/1090
215/65R16C	106/104T	6.5J	9.0	950/900
225/65R16C	112/110T	6.5J	9.0	1120/1060
215/60R16C	103/101T	6.5J	9.0	875/825

PCR



## Business Vehicle Tyre

# XCI



Closed shoulder design provides superior lateral rigidity, traction and braking capacity.



Zigzag sheet steel design provides splendid ground grasping capacity.



Three longitudinal grooves provide excellent draining performance.



### Main Size & Specification

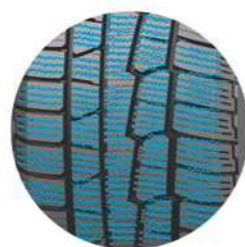
SIZE	LI & SS	STD RIM	Thread Depth (mm)	LOAD & PRESSURE (kg kpa)
<b>13 inch'</b>				
155/65R13	73Q	4.5B	6.6	365 300
155/70R13	75Q	4.5B	7.5	387 300
155/80R13	79Q	4.5B	7.5	437 300
165/65R13	77Q	5.0B	7.5	412 300
165/70R13	79Q	5.0B	7.5	437 300
165/80R13	83Q	4.5B	7.5	487 300
175/70R13	82Q	5.0B	7.5	475 300
185/70R13	86Q	5.5B	7.5	530 300
<b>14 inch'</b>				
155/55R14	69Q	5.0J	7.5	325 300
165/55R14	72Q	5.0J	7.5	355 300
165/60R14	75Q	5.0J	7.5	387 300
165/65R14	79Q	5.0J	7.5	437 300
165/70R14	81Q	5.0J	7.5	462 300
175/65R14	82Q	5.0J	7.5	475 300
175/70R14	84Q	5.0J	7.5	500 300
185/60R14	82Q	5.5J	7.5	475 300
185/65R14	86Q	5.5J	7.5	530 300
185/70R14	88Q	5.5J	7.5	560 300
195/60R14	86Q	6.0J	7.5	530 300
195/70R14	91Q	6.0J	7.5	615 300
205/60R14	88Q	6.0J	7.9	560 300
205/70R14	98Q	6.0J	7.9	750 340
<b>15 inch'</b>				
165/50R15	73T	5.0J	7.5	365 300
165/55R15	75T	5.0J	7.5	387 300
175/65R15	84T	5.0J	7.5	500 300
185/45R15	75T	6.0J	7.5	387 300
185/55R15	82T	6.0J	7.7	475 300
185/60R15	84T	5.5J	7.5	500 300
185/65R15	88T	5.5J	7.5	560 300
195/50R15	82T	6.0J	7.9	475 300
195/55R15	85T	6.0J	7.7	515 300
195/60R15	88T	6.0J	7.5	560 300
195/65R15	91T	6.0J	7.9	615 300
205/60R15	91T	6.0J	7.9	615 300
205/65R15	94T	6.0J	7.9	670 300
205/70R15	96T	6.0J	7.7	710 300
215/60R15	94T	6.5J	7.9	670 300
215/65R15	96T	6.5J	7.9	710 300
215/65R15	100T	6.5J	7.9	800 340
215/70R15	98T	6.5J	7.7	750 300
<b>16 inch'</b>				
165/40R16	70T	6.0J	7.5	335 340
165/45R16	70T	5.5J	7.5	335 340
195/45R16	84H	6.5J	7.9	500 340
195/55R16	87H	6.0J	7.9	545 300
205/45R16	87H	7.0J	7.9	545 340
205/50R16	87H	6.5J	7.9	545 300
205/55R16	91H	6.5J	7.9	615 300
205/55R16	94H	6.5J	7.9	670 340
205/60R16	92T	6.0J	7.9	630 300
205/65R16	95T	6.0J	7.9	690 300
215/55R16	93H	7.0J	7.9	650 300
215/55R16	97H	7.0J	7.9	730 340
215/60R16	99T	6.5J	7.9	775 340
225/55R16	99H	7.0J	7.9	775 340
225/60R16	98H	6.5J	7.9	750 300
<b>17 inch'</b>				
215/65R17	98H	6.5J	7.9	750 350
215/45R17	91H/V	7.0J	7.9	615 340
235/60R17	102H	7.0J	7.9	850 350



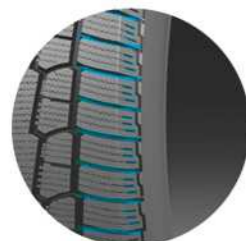
## Winter Tyre XS1



Four longitudinal grooves improve draining performance and grip capacity on snow.



3D sheet steel design provides excellent ground grasping capacity on ice and snow.



Wide double groove avoid sideslip.



3D knife slot pattern simialr like nail on ice and snow road.

### Main Size & Specification

SIZE	LI & SS	STD RIM	Thread Depth (mm)	SINGLELOAD kg
<b>15 inch'</b>				
LT235/75R15	104/101R	6.5J	11.5	900/825
31*10.5R15LT	109R	8.5J	12.0	1030
<b>16 inch'</b>				
LT215/85R16	115/112R	6.0J	11.0	1215/1120
LT225/75R16	115/112R	6.0J	11.0	1215/1120
LT235/85R16	120/116R	6.5J	12.0	1380/1260
LT245/75R16	120/116R	7.0J	12.0	1380/1260
LT265/75R16	123/120R	7.5J	12.0	1550/1400
LT285/75R16	122/119R	8.0J	12.0	1500/1360
LT305/70R16	124/121R	9.0J	12.0	1600/1450
LT315/75R16	121/118R	8.5J	12.0	1450/1320
<b>17 inch'</b>				
LT235/80R17	120/117R	6.5J	12.0	1400/1285
LT245/75R17	121/118R	7.0J	12.0	1450/1320
LT265/70R17	121/118R	8.0J	12.0	1450/1320
LT285/70R17	121/118R	8.5J	12.0	1450/1320
LT315/70R17	121/118R	9.5J	12.0	1450/1320
<b>18 inch'</b>				
LT265/70R18	124/121R	8.0J	12.0	1600/1450
LT275/70R18	125/122R	8.0J	12.0	1650/1500
LT275/65R18	123/120R	8.0J	12.0	1550/1440

PCR



## 4x4 A/T Tyre XT1



Strong carcass and convex sidewall design ensures superior wear resistance.



Four curved grooves increase grip and self-cleaning capacity on mud and gravel road.



Wide open shoulder design provides superior lateral rigidity, traction and braking capacity.



Zigzag sheet steel provides excellent ground grasping and driving comfort.



**ST Tyre**  
**XT2**

Main Size & Specification

SIZE	LI & SS	Side Wall+Tread	Thread Depth (mm)	SINGLELOAD kg
<b>15 inch'</b>				
ST175/80R13	91/87L	2P+2S+1N	7.0	615/545
<b>16 inch'</b>				
ST205/75R14	100/96L	2P+2S+1N	7.5	800/710
ST215/75R14	102/98L	2P+2S+1N	7.5	850/750
<b>17 inch'</b>				
ST205/75R15	101/97L	2P+2S+1N	7.5	825/730
ST205/75R15	107/102L	2P+2S+1N	7.5	975/850
ST225/75R15	113/108L	2P+2S+1N	8.0	1150/1000
ST225/75R15	117/112L	2P+2S+1N	8.0	1285/1120
<b>18 inch'</b>				
ST235/80R16	123/119L	2P+2S+1N	8.0	1550/1360
ST235/85R16	121/117L	2P+2S+1N	8.0	1450/1285
ST235/85R16	125/121L	2P+2S+1N	8.0	1650/1450



Strong carcass and convex sidewall design ensures long distance transport.



Zigzag pattern provides excellent ground grasping and driving comfort.

Five curved grooves increase grip and self-cleaning capacity on mud and gravel road.

### Main Size & Specification

Size	Load Index	Speed Rating	Rim	O.D mm	S.W mm	Max Load kg	Max Pressure kpa
LT215/85R16 10PR	115/112	Q	6.0	778	216	1215/1120	550
LT235/85R16 10PR	120/116	Q	6.5	812	235	1380/1260	550
LT215/75R15 6PR	100/97	Q	6.0	709	216	800/730	350
LT235/75R15 6PR	104/101	Q	6.5	739	235	900/825	350
LT225/75R16 10PR	115/112	Q	6.0	750	223	1215/1120	550
LT245/75R16 10PR	120/116	Q	7.0	780	248	1380/1260	550
LT265/75R16 10PR	123/120	Q	7.5	810	267	1550/1400	550
LT285/75R16 10PR	126/123	Q	8.0	840	286	1700/1550	550
LT315/75R16 10PR	127/124	Q	8.5	884	313	1750/1600	450
LT265/70R17 10PR	121/118	Q	8.0	810	272	1450/1320	550
LT285/70R17 8PR	121/118	Q	8.5	838	292	1450/1320	450
LT305/70R16 8PR	118/115	Q	9.0	840	311	1320/1215	350
31×10.50R15LT 6PR	109	Q	8.5	781	268	1030	350
32×11.50R15LT 6PR	113	Q	9.0	807	290	1150	350
33×12.50R15LT 6PR	108	Q	10.0	832	318	1000	250

PCR



4x4 M/T Tyre

**KL3000**



Unidirectional tread design, with large shoulder blocks and tread blocks provide traction in muddy conditions and easy self-cleaning.



Unique shoulder blocks, enhance traction in muddy conditions and snowy conditions.



Shoulder design for minimizing cut injury under muddy conditions.

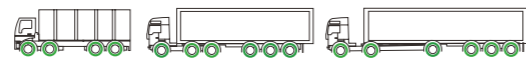


- Classic zigzag type patterns and more scientific pattern angle is suitable for steering positions.
- Transversal and open pattern on the tire shoulder provide better gripping capability.

# KL300

ALL POSITION/MIX SERVICE

Load Performance ★★★★★  
Wear Performance ★★★★★  
Speed Performance ★★★★★  
Transport Distance ★★★★★



SIZE	PR	Thread Depth (mm)	LI & SS
7.00R16LT	14	10.5	118/114L
7.50R16LT	16	13.5	122/118L
8.25R16LT	16	14.5	128/124L
8.25R20	16	15.0	139/137K
9.00R20	16	15.5	144/142K
10.00R20	18	16.0	149/146K
11.00R20	18	16.5	152/149K
12.00R20	20	17.0	156/153K
12.00R24	20	18.0	160/157K
11R22.5	16	16.0	146/143M
12R22.5	18	16.0	152/149M
13R22.5	18	17.0	154/151M
315/80R22.5	20	16.0	156/150M

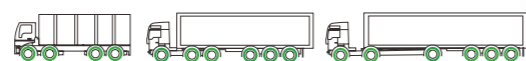


- High performance mixed pattern, semi-independent crown decorative pattern, the integration of shoulder pattern, high load capacity, suitable for all kinds of complicated road.

# KL301

ALL POSITION/MIX SERVICE

Load Performance ★★★★★  
Wear Performance ★★★★★  
Speed Performance ★★★★★  
Transport Distance ★★★★★

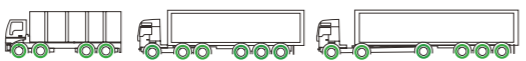


SIZE	PR	Standard Rim	LI & SS
11.00R20	16	8.0	150/147L

- High performance mixed pattern, semi-independent crown pattern, integrated shoulder pattern, high load capacity, suitable for all kinds of complicated pavement.

# KL302

ALL POSITION/MIX SERVICE



SIZE	PR	Standard Rim	LI & SS
10.00R20	16	7.5	146/143L
10.00R20	18	7.5	149/146L
11.00R20	16	8.0	140/147L
11.00R20	18	8.0	152/149L
12.00R20	18	8.5	154/151L
12.00R20	20	8.5	156/153L

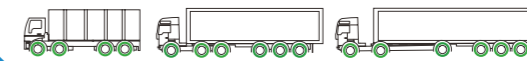


- High speed shunning pattern, excellent high speed performance, durable wear-resisting, reduce the impact of the road, suitable for fine road use.

# KL303

ALL POSITION/MIX SERVICE

Load Performance ★★★★★  
Wear Performance ★★★★★  
Speed Performance ★★★★★  
Transport Distance ★★★★★



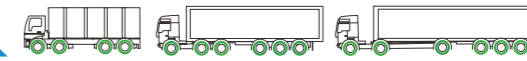
SIZE	PR	Standard Rim	LI & SS
12.00R24	18	8.5	156/153K
12.00R24	20	8.5	160/157K

- Excellent traction and off-road performance, super ground adhesion, abrasion resistance, strong load capacity and puncture resistance.

# KL306

ALL POSITION/MIX SERVICE

Load Performance ★★★★★  
Wear Performance ★★★★★  
Speed Performance ★★★★★  
Transport Distance ★★★★★



SIZE	PR	Standard Rim	LI & SS
8.25R16LT	14	6.50H	126/122M
8.25R16LT	16	6.50H	128/124M
10.00R20	16	7.5	146/143L
10.00R20	18	7.5	149/146L
11.00R20	16	8.0	150/147L
11.00R20	18	8.0	152/149L
12.00R20	18	8.5	154/151L
12.00R20	20	8.5	156/153L



- Suitable for all wheels on common and higher level highway.
- Good performance of tearing resistance and abnormal wear of tire shoulder.
- Excellent in heat dispersion.
- Softer and comfortable driving experience.

# KL307

RECOMMENDED VEHICLE & POSITION



Pattern	P.R.	Standard Rim	Load Index
11.00R20	18	8.00	152/149
12.00R20	20	8.50	156/153
11R22.5	16	8.25	146/143
12R22.5	18	9.00	152/149
315/80R22.5	20	9.00	156/150

**TRR**

- Abrasion and puncture resistance are good.
- High loading capability and good grasping performance
- Suitable for rough road and highway.

## KL308

DRIVE ON/OFF ROAD SERVICE

Load Performance ★★★★★  
 Wear Performance ★★★★★  
 Speed Performance ★★★★★  
 Transport Distance ★★★★★



SIZE	PR	Thread Depth (mm)	LI & SS
10.00R20	18	18.0	149/146K
9.00R20	16	16.0	144/142K

- Good ground grasping capability on snow and miry road
- Good traction performance, abrasion resistance.
- Low noise when running, longer mileage.

## KL309

DRIVE ON/OFF ROAD SERVICE

Load Performance ★★★★★  
 Wear Performance ★★★★★  
 Speed Performance ★★★★★  
 Transport Distance ★★★★★



SIZE	PR	Thread Depth (mm)	LI & SS
11R22.5	16	21	148/145M
13R22.5	16	22	154/151L
295/80R22.5	16	22	150/147M
1000R20	18	20.5	149/146J
1100R20	18	21	152/149J
1200R20	18	21.5	154/151J
1200R24	20	23	160/157K

- Classic zigzag type patterns and more scientific pattern angle is suitable for steering positions.
- Transversal and open pattern on the tire shoulder provide better gripping capability.

## KL358

ALL POSITION/MIX SERVICE

Load Performance ★★★★★  
 Wear Performance ★★★★★  
 Speed Performance ★★★★★  
 Transport Distance ★★★★★



- Suitable for steer and all position, Ex-good load capacity and high speed capability, extra ordinary anti-side-skid and anti-wet property.

## KL366

STEER/TRAILER HIGHWAY SERVICE

Load Performance ★★★★★  
 Wear Performance ★★★★★  
 Speed Performance ★★★★★  
 Transport Distance ★★★★★



SIZE	PR	Thread Depth (mm)	LI & SS
8.5R17.5	12	13.0	121/120L
9.5R17.5	16	13.0	129/127L
8R22.5	14	13.5	130/128M
9R22.5	16	14.5	139/137M
10R22.5	16	15.5	144/142M
11R22.5	16	16.5	146/143M
11R24.5	16	16.5	149/146L
13R22.5	18	16.5	154/151L
295/80R22.5	16	16.5	152/148M
315/70R22.5	18	17.0	151/148L
205/75R17.5	14	12.5	124/122M
215/75R17.5	14	12.5	126/124M
225/75R17.5	16	12.5	129/127M
235/75R17.5	18	13.0	143/141J
245/70R17.5	18	12.5	143/141J
225/70R19.5	14	13.0	128/126M
245/70R19.5	18	12.5	143/141J
255/70R22.5	16	14.0	140/137L
265/70R19.5	18	14.0	143/141J
285/70R19.5	18	14.0	150/148J

- Mixed block deeper patterns, widening road surface design to increase the grip; pattern self-cleaning ability; use of cut-resistant.
- Anti-stab bar, wear of the tread formulation, an increase of the tire wear resistance.
- Applicable to various non-paved roads.

## KL386

DRIVE ON/OFF ROAD SERVICE

Load Performance ★★★★★  
 Wear Performance ★★★★★  
 Speed Performance ★★★★★  
 Transport Distance ★★★★★



SIZE	PR	Thread Depth (mm)	LI & SS
9.00R20	16	18.5	144/142K
10.00R20	18	19.5	149/146K
11.00R20	18	19.5	152/149K
12.00R20	18	22.0	154/151K

- The pattern is a mixed pattern of large longitudinal groove, wide and deep. Have stronger tractional and holding, at the same time, the tire structure USES the super structure, excellent bearing capacity, super durable and resistance of tread formula, suitable for poor roads, road, dedicated to medium and short.

## KL388

STEER/TRAILER HIGHWAY SERVICE

Load Performance ★★★★★  
Wear Performance ★★★★★  
Speed Performance ★★★★★  
Transport Distance ★★★★★

SIZE	PR	Standard Rim	LI & SS
10.00R20	16	7.5	146/143K
10.00R20	18	7.5	149/146J
11.00R20	16	8.0	140/147K
11.00R20	18	8.0	152/149J
12.00R20	18	8.5	154/151K
12.00R20	20	8.5	156/153J

- Classic zigzag type patterns and more scientific pattern angle is suitable for steering positions.
- Transversal and open pattern on the tire shoulder provide better gripping capability.

## KL389

ALL POSITION/MIX SERVICE

Load Performance ★★★★★  
Wear Performance ★★★★★  
Speed Performance ★★★★★  
Transport Distance ★★★★★

- Mainly for short-medium distance transportation.
- Suitable for the ordinary and good road surfaces with medium-high speed running, with excellent anti-wet and anti-irregular-wear ability.
- Providing safe and stable running.

## KL396

TRAILER HIGHWAY SERVICE

Load Performance ★★★★★  
Wear Performance ★★★★★  
Speed Performance ★★★★★  
Transport Distance ★★★★★

SIZE	PR	Thread Depth (mm)	LI & SS
385/65R22.5	20	16.5	160K
425/65R22.5	20	16	165K
445/65R22.5	20	17	169K

- High speed, high loading capability.
- Good traction, braking and ground grasping capability.
- Suitable for driving.

## KL397

TRAILER HIGHWAY SERVICE

Load Performance ★★★★★  
Wear Performance ★★★★★  
Speed Performance ★★★★★  
Transport Distance ★★★★★

SIZE	PR	Thread Depth (mm)	LI & SS
385/65R22.5	20	16.5	160K
425/65R22.5	20	16	165K
445/65R22.5	20	17	169K

- Good ground grasping capability on snow and miry road
- Good traction performance, abrasion resistance.
- Low noise when running, longer mileage.

## KL399

DRIVE ON/OFF ROAD SERVICE

Load Performance ★★★★★  
Wear Performance ★★★★★  
Speed Performance ★★★★★  
Transport Distance ★★★★★

SIZE	PR	Thread Depth (mm)	LI & SS
1000R20	18	20.5	149/146J
1100R20	18	21	152/149J
1200R20	18	21.5	154/151J

- Avoiding anomalistic abrasion, longer mileage, low noise. Suitable for highway speed

## KL600

STEER/TRAILER HIGHWAY SERVICE

Load Performance ★★★★★  
Wear Performance ★★★★★  
Speed Performance ★★★★★  
Transport Distance ★★★★★

SIZE	PR	Thread Depth (mm)	LI & SS
11R22.5	16	15.0	146/143M
11R24.5	16	15.0	149/146M
285/75R24.5	16	15.0	147/144L
295/75R22.5	16	15.0	146/143L

- Good ground grasping capability on snow and miry road
- Good traction performance, abrasion resistance.
- Low noise when running, longer mileage.

# KL660

DRIVE ON/OFF ROAD SERVICE

Load Performance  
Wear Performance  
Speed Performance  
Transport Distance



SIZE	PR	Thread Depth (mm)	LI & SS
11R22.5	16	22.5	146/143M
11R24.5	16	22.5	149/146L
285/75R24.5	16	22.5	147/144L
295/75R22.5	16	22.5	146/143L



- High speed, high loading capability
- Good traction, braking and ground grasping capability
- Suitable for driving.

# KL755

DRIVE/HIGHWAY SERVICE

Load Performance  
Wear Performance  
Speed Performance  
Transport Distance



SIZE	PR	Thread Depth (mm)	LI & SS
10.00R20	18	21.5	149/146L
12R22.5	18	20.0	152/149M
295/80R22.5	18	20.0	154/151M
315/80R22.5	20	20.0	157/154M

- High speed, high loading capability; good sideslip and mud slip resistance.
- Suitable for guiding and all use.

# KL766

STEER/TRAILER HIGHWAY SERVICE

Load Performance  
Wear Performance  
Speed Performance  
Transport Distance



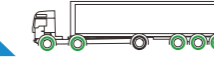
SIZE	PR	Thread Depth (mm)	LI & SS
12R22.5	18	15.0	152/149M
295/80R22.5	18	15.0	154/151M
315/80R22.5	20	16.0	157/154M

- High speed, high loading capability
- Good traction, braking and ground grasping capability
- Suitable for driving

# KL785

DRIVE/HIGHWAY SERVICE

Load Performance  
Wear Performance  
Speed Performance  
Transport Distance



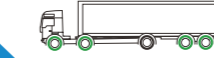
SIZE	PR	Thread Depth (mm)	LI & SS
11.00R22 TL	18	22	154/151L
11.00R22 TT	18	22	154/151L
11R22.5	16	18	146/143M
12R22.5	18	18	152/149M
13R22.5	18	18	154/151L
315/70R22.5	18	18	151/148L
205/75R17.5	14	18	124/122M
215/75R17.5	14	14.5	126/124M
225/75R17.5	16	14.5	129/127M
235/75R17.5	16	15.5	132/130M
245/70R17.5	16	16	136/134M
225/70R19.5	14	15.5	128/126M
245/70R19.5	16	16	136/134M
265/70R19.5	16	16	140/138M
285/70R19.5	16	18	146/144M

- High speed, high loading capability; good traction, braking and ground grasping capability.
- Suitable for driving.

# KL786

STEER/TRAILER HIGHWAY SERVICE

Load Performance  
Wear Performance  
Speed Performance  
Transport Distance



SIZE	PR	Thread Depth (mm)	LI & SS
1100R22	18	15.0	154/151L
11R22.5	16	15.0	146/143M
12R22.5	18	16.0	152/149M
13R22.5	18	15.0	154/151L
295/80R22.5	18	16.0	154/151M
315/80R22.5	20	16.0	157/154M

- High performance mixed pattern, semi-independent crown pattern, integrated shoulder pattern, high load capacity, suitable for all kinds of complicated pavement.

# KL787

STEER/TRAILER HIGHWAY SERVICE

Load Performance  
Wear Performance  
Speed Performance  
Transport Distance



SIZE	PR	Standard Rim	LI & SS
12.00R24	18/20	8.5	158/155/160/157K



- Applicable for drive axle, to mix and bad road surface, such as construction road
- Providing good grip performance.
- Good wear resistance and long mileage.

## KL826

DRIVE / MIX SERVICE



SIZE	PR	Thread Depth (mm)	LI & SS
11R22.5	16	22.5	146/143M
11R22.5	16	25	148/145J
12R22.5	18	22	152/149M
1200R24	18	31.5	158/155F
1200R24	20	31.5	160/157F

- Colsed designed for tire shoulder, improved eccentric wear resistant.
- Providing excellent drainage performance and drive stability.
- High saturability design for pattern, possessing long drive life and low noise; suitable for good road conditioning.

## KL886

ALL POSITION/MIX SERVICE



SIZE	PR	Thread Depth (mm)	LI & SS
11.00R20	18	14.5	152/149J
12R22.5	18	16.0	152/149M

- Applicable for drive axle, to mix and bad road surface, such as construction road
- Providing good grip performance.
- Good wear resistance and long mileage.

## KL727

DRIVE / MIX SERVICE



SIZE	PR	Thread Depth (mm)	LI & SS
12R22.5	16	18	150/147K
12R22.5	18	18	152/149K
315/80R22.5	16	18	154/151K
315/80R22.5	18	18	156/150K

## QZ-602 F-2



Size	PR	Type	40'HQ
11.2-24	4	TT/TL	245
11.2-24	6	TT/TL	245
11.2-38	4	TT/TL	145
11.2-38	6	TT/TL	145
14.9-24	4	TT/TL	150
14.9-24	6	TT/TL	150

- Designed for mobile irrigation equipment
- Proven 23° tread for great traction
- Tough nylon-cord body for durability and long wear
- Flexible sidewall dural compounds

## QZ-710



Size	PR	Type	40'HQ
11.2-24	4	TT/TL	245
11.2-24	6	TT/TL	245
11.2-38	4	TT/TL	145
11.2-38	6	TT/TL	145
14.9-24	4	TT/TL	150
14.9-24	6	TT/TL	150

- Suitable for scrapers and forklifts operating in areas like port, air port, factory and warehouse
- Good cutting and wear resistance
- Wide and thick tread pattern

## Forklift



Size	PR	Type	40'HQ	Size	PR	Type	40'HQ
5.00-8	10	TT	3000	28x9-15/8.15-15	12	TT	650
6.00-9	10	TT	2400	28x9-15/8.15-15	14	TT	650
7.00-9	10	TT	1700	8.25-15	12	TT	580
6.50-10	10	TT	1700	8.25-15	14	TT	580
7.00-12	12	TT	1000	3.00-15	20	TT	300
8.25-12	12	TT	900	9.00-20	18	TT	380
7.00-15	12	TT	820	10.00-20	18	TT	280
560x165-11	12	TT	950	12.00-20	20	TT	220
680x180-15	14	TT	750	12.00-20	24	TT	220
7.50-15	12	TT	750				

- Excellent traction and stability. Deliver exceptional operator comfort.
- Designed for loaders, earthmovers and the equipment used in construction stockpile and truck-loading applications.

## B01N



Size	TRA Code	40'HQ
17.5R25	L3/E3	90
20.5R25	L3/E3	64
23.5R25	L3/E3	44
26.5R25	L3/E3	35
29.5R25	L3/E3	25
29.5R29	L3/E3	24

## B02N



Size	TRA Code	40'HQ
23.5R25	L3/E3	44
26.5R25	L3/E3	35
29.5R25	L3/E3	25
29.5R29	L3/E3	24

## B03S



Size	TRA Code	40'HQ
23.5R25	L3/E3	44
26.5R25	L3/E3	35
29.5R25	L3/E3	25
29.5R29	L3/E3	24

## B04S



Size	TRA Code	40'HQ
23.5R25	L3/E3	44
26.5R25	L3/E3	35
29.5R25	L3/E3	25
29.5R29	L3/E3	24

## M07S



Size	TRA Code	40'HQ
15.5-25	L3/E3	44
17.5-25	L3/E3	35
18.00-24	L3/E3	25
18.00-25	L3/E3	24

## M08S



Size	TRA Code	40'HQ
23.5R25	L3/E3	44
26.5R25	L3/E3	35
29.5R25	L3/E3	25
29.5R29	L3/E3	24

## MWS



Size	Star Rating	TRA Code	Type	Tread Depth	Standard Rim	Max Load	Max Pressure	40'HQ
17.5R25	★★	L5	TL	68	14.00/1.5	8500	6.5	66
20.5R25	★★	L5	TL	78	17.00/2.0	11500	6.5	48
23.5R25	★★	L4/L5	TL	87/51	19.50/2.5	14500	6.5	44
26.5R25	★★	L4/L5	TL	96/60	22.00/3.0	18500	6.5	28
29.5R25	★★	L4/L5	TL	104/66.5	25.00/3.5	22400	6.5	24
29.5R29	★★	L5	TL	104	25.00/3.5	23600	6.5	24
35/65R33	★★	L4/L5	TL	97/62.5	28.00/3.5	28000	6.5	18

## W-1



Applicable to the loader/dozer/earthmover/grader/scrapper  
Aggressive. Durable lug design, non-directional tread design  
The specially-formulated synthetic rubber compound

Size	PR	Type	40'HQ	Size	PR	Type	40'HQ
29.5-29	34	TL	25	15.5-25	20	TT/TL	120
29.5-29	28	TL	25	1300-24	12	TT/TL	130
29.5-25	34	TL	26	16/70-20	16	TT	180
29.5-25	28	TL	26	16/70-24	14	TT	120
26.5-25	32	TT/TL	36	16/70-24	16	TT	120
26.5-25	28	TT/TL	36	16/70-24	20	TT	120
26.5-25	24	TT/TL	36	14.00-24/1400-25	40	TT/TL	110
23.5-25	28	TT/TL	48	14.00-24/1400-25	36	TT/TL	110
23.5-25	24	TT/TL	50	14.00-24/1400-25	32	TT/TL	120
23.5-25	20	TT/TL	50	14.00-24/1400-25	28	TT/TL	120
23.5-25	16	TT/TL	50	14.00-24/1400-25	24	TT/TL	120
20.5-25	24	TT/TL	64	1600-25/1600-24	40	TT/TL	70
20.5-25	20	TT/TL	70	1600-25/1600-24	36	TT/TL	70
20.5-25	16	TT/TL	70	1600-25/1600-24	32	TT/TL	70
17.5-25	24	TT/TL	90	1800-25/1800-24	28	TT/TL	70
17.5-25	20	TT/TL	95	1800-25/1800-24	40	TL	50
17.5-25	16	TT/TL	95	1800-25/1800-24	36	TL	50
15.5-25	16	TT/TL	120	1800-25/1800-24	32	TL	50

## W-2



Applicable to the loader/dozer/earthmover/grader/scrapper  
Aggressive. Durable lug design, non-directional tread design  
The specially-formulated synthetic rubber compound

Size	PR	Type	40'HQ	Size	PR	Type	40'HQ
15.5-25	16	TT/TL	120	18.00-25	32	TL	50
15.5-25	20	TT/TL	120	18.00-25	28	TL	50
16/70-20	16	TT	180	18.00-25	24	TL	50
16/70-24	14	TT	120	20.5-25	24	TT/TL	64
16/70-24	16	TT	120	20.5-25	20	TT/TL	70
16/70-24	20	TT	120	20.5-25	16	TT/TL	70
16.00-25/16.00-24	40	TT/TL	70	23.5-25	28	TT/TL	48
16.00-25/16.00-24	36	TT/TL	36	23.5-25	24	TT/TL	50
16.00-25/16.00-24	32	TT/TL	70	23.5-25	20	TT/TL	50
16.00-25/16.00-24	28	TT/TL	70	23.5-25	16	TT/TL	50
17.5-25	24	TT/TL	90	26.5-25	32	TT/TL	36
17.5-25	20	TT/TL	95	26.5-25	28	TT/TL	36
17.5-25	16	TT/TL	95	26.5-25	24	TT/TL	36
18.00-24	40	TL	50	29.5-29	34	TL	25
18.00-24	36	TL	50	29.5-29	28	TL	25
18.00-24	32	TL	50	29.5-25	34	TL	26
18.00-24	28	TL	50	29.5-25	28	TL	26
18.00-24	24	TL	50				
18.00-25	40	TL	50				
18.00-25	36	TL	50				